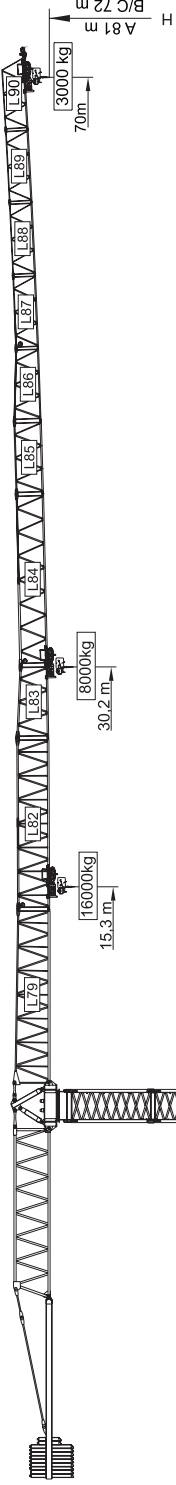


65m - 3.700kg **I** 60m - 4.400kg **II** 55m - 5.100kg **III** 50m - 5.700kg **IV** 45m - 6.400kg **V** 40m - 7.300kg **VI** 38m - 7.700kg **VII** 33m - 8.400kg **VIII** 28m - 10.100kg **IX**



Yük Diagramı Cargas.Lasten.Charges.Cargichi.Yüklgr. ГРУЗОПОДЪЁМНОСТЬ

Icon	Tower Height (m)	Tower Weight (kg)	Tower Weight (kg/m)	Tower Weight (kg/m ²)	Tower Weight (kg/m ³)	Tower Weight (kg)		Tower Weight (kg)								
						16000	8000	33	38	40	45	50	55	60	65	70
	70m	20000 kg 9x2000 + 2x1000 kg	30.2 m	16000	8000	L79+L82+L83+L84+L85 L86+L87+L88+L89+L90	7280	6220	5870	5130	4540	4050	3650	3300	3000	
	65m	20000 kg 9x2000 + 2x1000 kg	33.2 m	8000	8000	L79+L82+L83+L84+L85 L86+L87+L88+L89	6680	5620	5270	4530	3940	3450	3050	2700	2400	
	60m	19000 kg 9x2000 + 1x1000 kg	35.4 m	8000	8000	L79+L82+L83+L84+L85 L86+L87+L88	7490	6320	5940	5120	4470	3940	3490	3100		
	55m	19000 kg 9x2000 + 1x1000 kg	36.9 m	8000	8000	L79+L82+L83+L84+L85 L86+L87	8090	7440	7030	6160	5460	4890	4400			
	50m	18000 kg 9x2000 kg	37 m	8000	8000	L79+L82+L83+L84 L85+L86	8470	7770	7340	6440	5710	5100	4500			
	45m	16000 kg 8x2000 kg	36.8 m	8000	8000	L79+L82+L83+L84+L85	8490	7790	7360	6450	5700	5100				
	40m	15000 kg 7x2000+1x1000 kg	36.8 m	8000	8000	L79+L82+L83+L84	8470	7770	7340	6440	5710	5100				
	38m	14000 kg 7x2000 kg	37.1 m	8000	8000	L79+L82+L83+L85+L86	8470	7770	7340	6440	5710	5100				
	33m	12000 kg 6x2000 kg	33 m	8000	8000	L79+L82+L83+L85	8400	7700	7300	6400	5700	5100				
	28m	11000 kg 5x2000 + 1x1000 kg	28 m	8000	8000	L79+L82+L83	8400	7700	7300	6400	5700	5100				

